



Pishgaman Dry Port



Pishgaman
Dry Port



Pishgaman Dry Port

Pishgaman Dry Port Cooperative Company

Pishgaman dryport started its activities with more than 7,000 member and non-member shareholders in the year of 2012 to establish the first cooperative dry port of Iran in the geographical center of the country. With the aim of managing the comprehensive supply chain.

Pishgaman dry port holding a powerful and modern information and communication technology infrastructure and a business unit window system establishment, latest system for clearance and tracking of goods, acceptance and executing the request of owners without recurring physical presence and also a passive defense protocol consideration in a safe area in the center of the country has offered an appropriate and ideal base for economic activity of merchants in various fields.

This complex with an area of more than 700 hectares, is a suitable location for logistics activities and port services such as unloading and loading, changing the method of transportation, cargo depot and stashing products.





Road, Rail, Sea and Air Transportation Services

The road transportation company has started operating in a 4-hectare town by using the well-equipped and large transport fleet and facilitates the road transporting throughout the country.

The connection of Pishgaman Dry Port's railway to the national railway lines of the country and operation of the railway infrastructure of this port, including Shunting Yard area with 5 railway lines, has facilitated unloading and loading of trains that carrying bulk cargo .

In ports, stashing and transferring services on board of the ship (FOB) and sea transportation services are provided by this company .

The existence of a private airport near the dry port is another advantage of this economic port for traders and merchants .

Most of the received and sent consignments of Pishgaman Dry-Port have a combined transport and the provision of rail and road weighbridge services and unloading at the destination based on the request of the customer are other services of Pishgaman Dry Port.



Customs Services in the Exclusive Customs of Pishgaman Dry Port

Customs of the Islamic Republic of Iran in Pishgaman Dry Port has been put into operation and ready to provide services to traders in an area of 8 hectares with all facilities such as connecting 2 railway lines, rail and road unloading and loading platform for final clearance of goods and exports.

Port Services

The unloading and loading equipment for bulk cargo, container and general cargo are prepared and also the striping, staffing and lashing services on the train or inside of container are possible in Pishgaman dry port.



Cold Storage Services

Cold storages of Pishgaman Dry Port with 39 halls and a total capacity of 15,000 tons in the form of 2 circuits at zero and below zero temperatures are ready to store products. Cold storages of Pishgaman Dry Port administered by the customs of the Islamic Republic is a suitable place for storing strategic food products of the country.

Fruit Processing Services

This center is one of the largest centers for processing and producing of dried fruits in the country, with the potential of producing nearly 1000 tons of fruit chips per year.



Warehousing Services

Pishgaman Dry Port has three roofed warehouses with a total area of 14,000 m² with a capacity of more than 30,000 tons, 8 hectares of open customs warehouse for storage of container and general goods and more than 10 hectares of open warehouse for storage of bulk cargo that traders can use them if needed .

Supply Chain Management of Goods and Services

Supply chain of goods and services in the Pishgaman Dry Port is based on the needs of economic producers, traders and owners of goods for economic activities including production, export and import, customs services and clearance, port, warehousing, rail and road wighbriges, inspection of goods and etc.

Cold storages of Dry Port company, Bazargam company, Ecobar company, Parsi Post company, Fruit and Juice Products of Pishgaman Kavir Cooperative Company, Dry Port Transport of Pishgaman Transportation Cooperative Company, Novin Pars Rail Transportation of Pishgaman Cooperative Company, Dry Port Logistics of Pishgaman Transportation Cooperative Company, Tak Nirou Kavir of Pishgaman Cooperative Company, Noor Talaei Route of Pishgaman Cooperative Company, Petro San'at Pishro of Pishgaman Dry Port Cooperative Company and Rahbaran-e-Moshtagh Transportation Technical Services Company are part of the Pishgaman Dry Port chain.



Developing the Second Phase of Pishgaman Dry Port and Investing in Agriculture, Energy and Transportation Fields

Pishgaman Dry-Port has a license to establish a logistics village and a general economic terminal with an approach to agricultural products and also have been set up the establishment the largest greenhouse town of the country with an area of 120 hectares by hydroponic cultivation and seed lines.

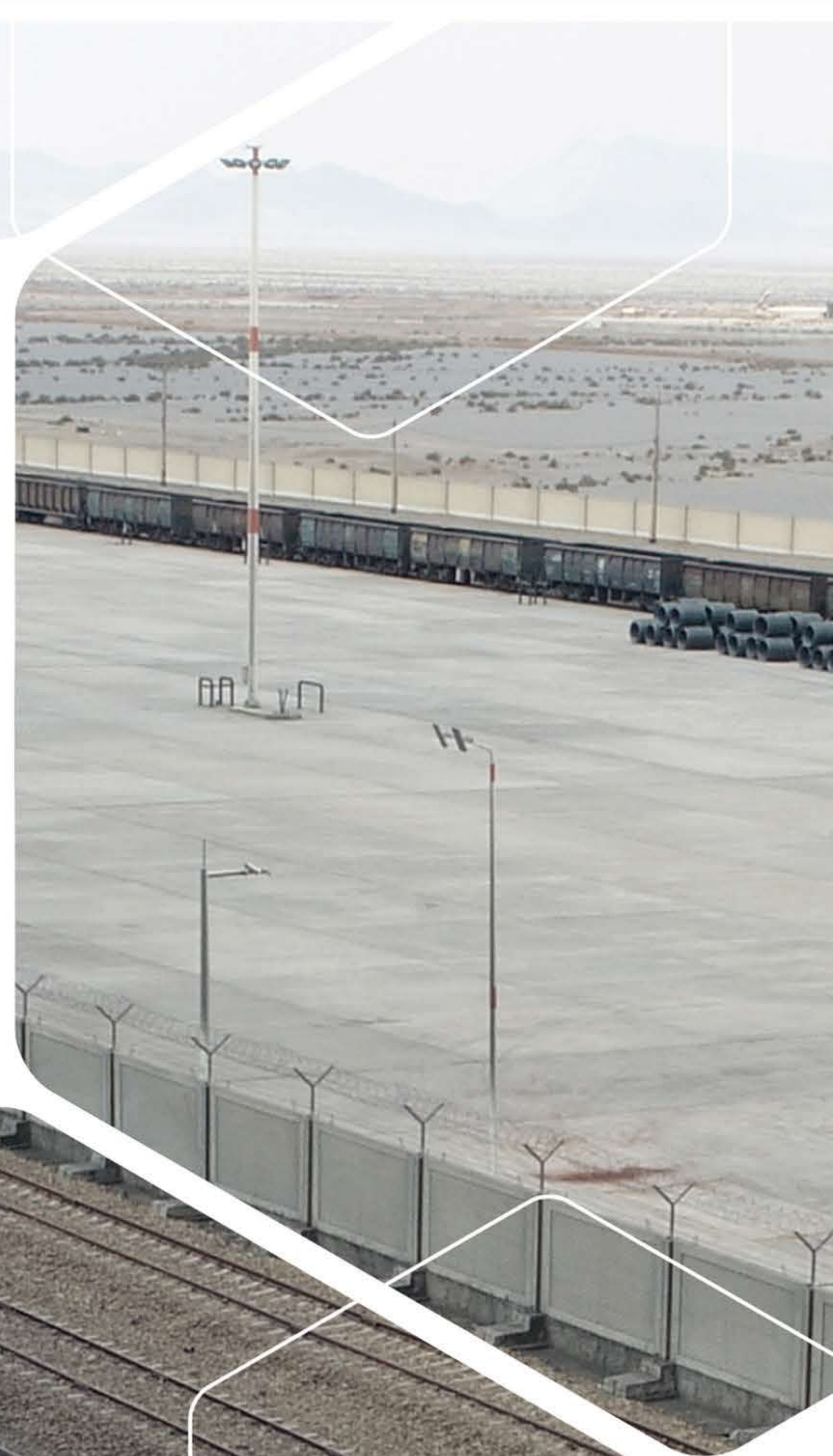
Silos and mechanized warehouses for livestock feed with a capacity of 27,000 tons are being constructed to store livestock and poultry feed in the form of 9 metal silos and 2 mechanized warehouses on a 4-hectare land

Launching and constructing a 50 MW combined cycle power plant on a 4-hectare land in order to supply the required electricity of Pishgaman Dry Port and providing its surplus to the country's electricity distribution circuit is also one of the activities in the second phase. Establishment a high-powered and smart Road Transport Company as a cooperative in order to reduce transportation costs and promote the social health of the large community of drivers in the country is another project underway.

This company in the form of a large town has facilities such as restaurants, mosques, resorts, shopping malls, specialized service centers for repairing and selling heavy vehicle parts and fuel stations, some of which have been put into operation and the rest are under operation.

Prospect

Based on the 20-year perspective, Pishgaman dryport will be the most modern logistics port in the Middle East, which by managing technology services, most of its activities will be done as online and by using the most up-to-date information technologies.



9th km of Cement Road
20th km of Yazd - Mehriz Road
Yazd Province
Phone: 035-31024000-9
Postal Code: 8981189185
www.pidp.ir